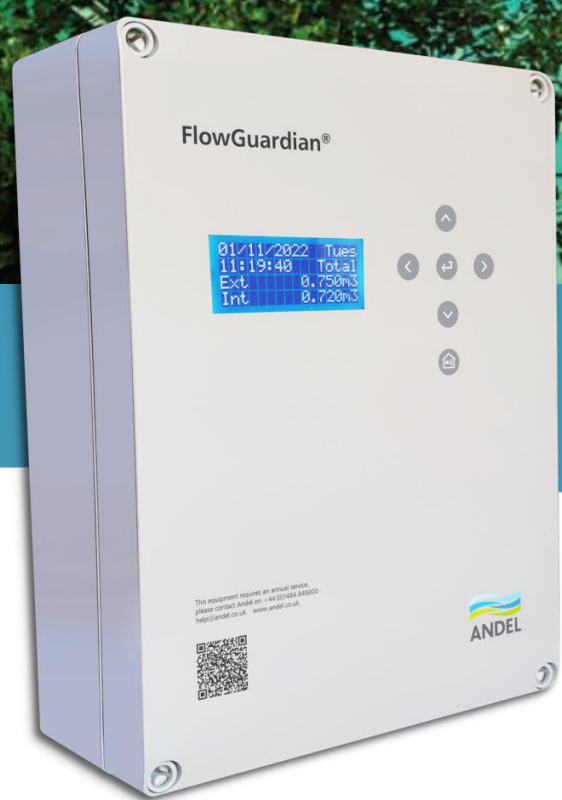


Water Sustainability in the built environment

A range of Water Sustainability products that can reduce water usage, reduce water wastage and save money on water bills



Making water sustainable for
a cleaner and safer environment.

FOR MORE INFORMATION:

☎ +44 (0)1484 845 000

✉ help@andel.co.uk

🌐 www.andel.co.uk

BREEAM

Building Research Establishment
Environmental Assessment Methodology

Allows building owners to work towards achieving a BREEAM Outstanding Certification.

(For example, all new government buildings in the UK require a BREEAM rating of at least Excellent in the UK)



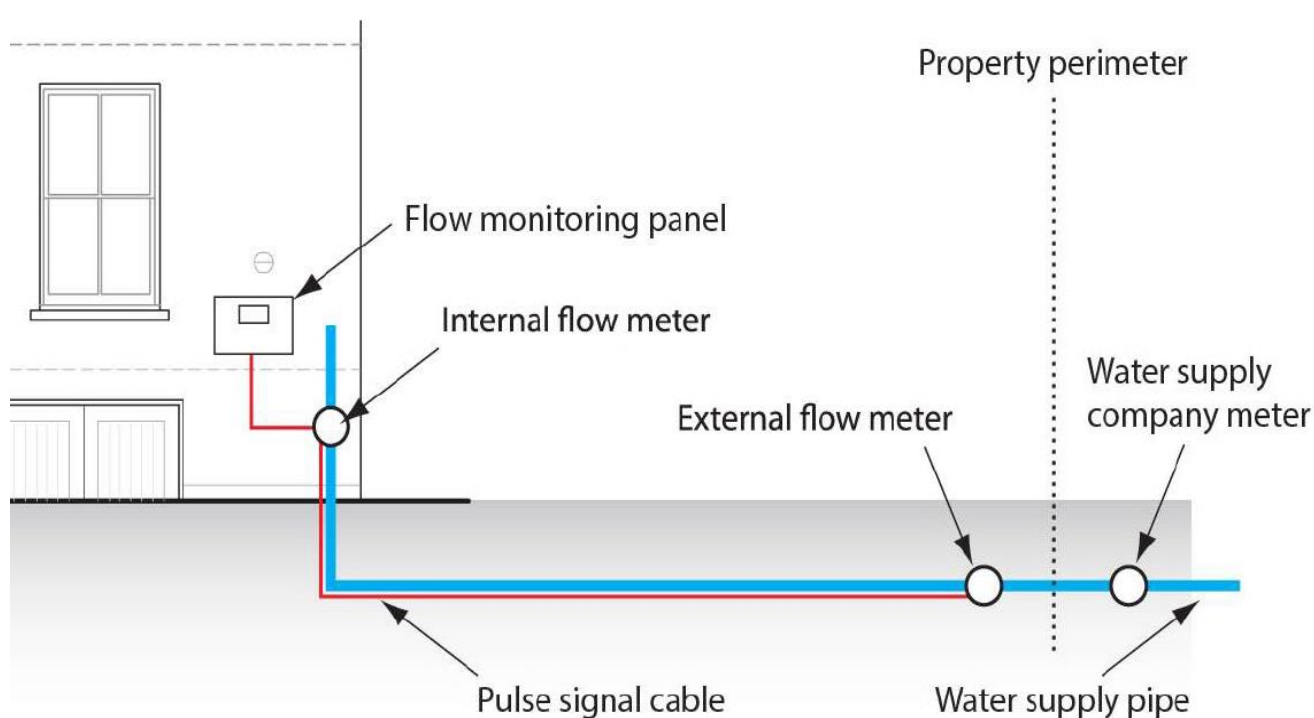
One credit - Leak detection system

A leak detection system which can detect a major water leak on the mains water supply within the building and between the building and the utilities' water meter is installed.

- A permanent automated water leak detection system that alerts the building occupants to the leak OR an inbuilt automated diagnostic procedure for detecting leaks is installed.
- Activated when the flow of water passing through the water meter/data logger is at a flow rate above a pre-set maximum for a pre-set period of time.
- Able to identify different flow and therefore leakage rates, e.g., continuous, high and/or low level, over set time periods.
- Programmable to suit the owner/occupiers' water consumption criteria.
- Where applicable, designed to avoid false alarms caused by normal operation of large water-consuming plant such as chillers.

Wat 03 Water Leak Detection and Prevention

Wat 03 Water leak detection, can provide up to 2 credits towards a buildings overall score.



One Credit - Flow control devices

- Flow control devices that regulate the supply of water to each WC area/facility according to demand are installed (and therefore minimise water leaks and wastage from sanitary fittings)



Making water sustainable for
a cleaner and safer environment.

FOR MORE INFORMATION:

☎ +44 (0)1484 845 000

✉ help@andel.co.uk

🌐 www.andel.co.uk

Andel Water Sustainability Products

FlowGuardian®

FlowGuardian® is a robust water leak detection and high-usage alarm system that measures flow between a site boundary and a property.



BENEFITS AT A GLANCE

- Major mains water leak alarm
- Excessive water usage alarm
- Protects against costly water leaks
- Monitors water usage
- Saves on water bills
- Can earn BREEAM WAT 02 and 03 credits

PIR WaterSave®

PIR WaterSave® is an effective water sustainability solution for office buildings, care homes, schools and any buildings with communal areas with running water.



BENEFITS AT A GLANCE

- Reduces water usage
- Reduces water wastage
- Protects against damaging and costly water leaks
- Saves on water bills
- Can earn one BREEAM WAT 03 credit

SmartDevice

Andel SmartDevice is a discreet unit that can attach to a choice of Andel water leak detection sensors. The discoverable Wi-Fi-enabled SmartDevice connects to all popular smart home apps, allowing for 24/7 monitoring.



BENEFITS AT A GLANCE

- Smart, cost-effective, sustainable solution
- Simple to install and set up
- Suitable for residential and commercial environments
- Attaches to multiple Andel's water leak detection sensors
- Discoverable Wi-Fi connects to all popular smart home apps
- Add email / text alerts via home app
- 24/7 monitoring
- Uses 2 x AAA batteries
- Easy surface mounting

FlowStop®

FlowStop® is a cost-effective water sustainability and water leak prevention system for apartments, hotel rooms, small offices, retail units and homes.



BENEFITS AT A GLANCE

- Highly cost-effective & Low maintenance
- Easy to install, easy to set-up
- Monitors up to two water supplies
- Freeze protection & Time-out protection
- Excess flow protection
- 24-hour non-use protection & Override control
- Flush or wall-mounted control unit
- Option to add leak detection sensors
- Optional connection to onward BMS and GSM for absent occupants
- Optional connection to Andel Smart Device for real-time notifications
- Mains or battery powered



Making water sustainable for a cleaner and safer environment.

FOR MORE INFORMATION:

☎ +44 (0)1484 845 000

✉ help@andel.co.uk

🌐 www.andel.co.uk